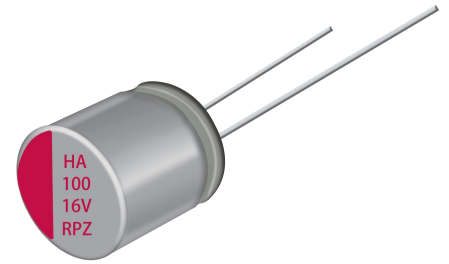


RPZ Series 引线式导电聚合物固体铝电解电容器极低 ESR 品 Extra Low ESR . Conductive Polymer . Radial Lead Type

- 105℃、2000 小时 105℃、2000 hours
- 性能稳定，可靠性高 High stability and reliability
- 极低 ESR、耐大纹波电流 Extra Low ESR、High ripple current capability

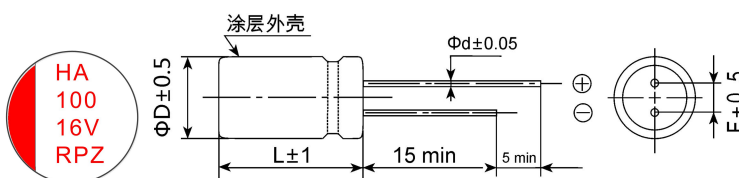


主要技术性能 Specifications

| 项目 Items | 主要特性 Performance Characteristics | |
|---|--|---|
| 使用温度范围 Operating Temperature Range | -55~+105℃ | |
| 额定电压范围 Rated Voltage Range | 2.5~25V. DC | |
| 标称容量允许偏差 Capacitance Tolerance | ±20% (120Hz, 20℃) | |
| 漏电流(20℃) Leakage Current | 施加额定工作电压 2 分钟, $I \leq 0.2 C_R U_R$ (μA) After 2 minutes' application of rated voltage, the leakage current is not more than $0.2 C_R U_R$ | |
| 损耗角正切值(120Hz 20℃) Dissipation Factor | 测试频率 120Hz/温度 20℃, 损耗小于规范值 Less than the specified value at 120Hz, 20℃ | |
| 等效串联电阻 Equivalent Series Resistance | 测试频率 100KHz/温度 20℃, 等效串联电阻小于规范值 Less than the specified value at 100KHz, 20℃ | |
| 耐久性 Load Life(105℃,2000hrs) | 在 105℃ 环境施加额定工作电压 2000 小时后,电容器的特性符合下表要求。 After 2000 hours' application of rated voltage at +105℃, capacitors meet the characteristics requirements listed . | |
| | 电容量变化率 Capacitance Change | 初始值的±20%以内 Within ±20% of the initial value |
| | 漏电流值 Leakage | ≤规范值 Less than the specified value |
| | 损耗角正切值 Dissipation Factor | ≤规范值的 150% Less than 150% of the specified value |
| | 等效串联电阻 Equivalent Series Resistance | ≤规范值的 150% Less than 150% of the specified value |
| 耐湿温特性 Damp heat(Steady state) (60℃,90~95%RH,1000hrs) | 在温度为 60℃、湿度为 90~95%RH 的环境中, 1000 小时后,电容器的特性符合下表要求。 60℃, 90 to 95%RH,1000h,No applied voltage capacitors meet the characteristics requirements listed . | |
| | 电容量变化率 Capacitance Change | 初始值的±20%以内 Within ±20% of the initial value |
| | 漏电流值 Leakage | ≤规范值 Less than the specified value |
| | 损耗角正切值 Dissipation Factor | ≤规范值的 150% Less than 150% of the specified value |
| | 等效串联电阻 Equivalent Series Resistance | ≤规范值的 150% Less than 150% of the specified value |

外形图及尺寸 Case size table

mm



| ΦD×L | ΦD | L | F | Φd |
|-------|-----|----|-----|---------|
| 5×6 | 5 | 6 | 2.0 | 0.5 |
| 5×7 | 5 | 7 | 2.0 | 0.5 |
| 5×8 | 5 | 8 | 2.0 | 0.5 |
| 6.3×5 | 6.3 | 5 | 2.5 | 0.5 |
| 6.3×8 | 6.3 | 8 | 2.5 | 0.5/0.6 |
| 6.3×9 | 6.3 | 9 | 2.5 | 0.5/0.6 |
| 8×8 | 8 | 8 | 3.5 | 0.6 |
| 8×12 | 8 | 12 | 3.5 | 0.6 |
| 10×12 | 10 | 12 | 5.0 | 0.6 |

RPZ Series

■ 编码和规格 Part number & Specifications

| 额定电压 Rated Voltage (V) | 标称容量 Capacitance (μ F) | 产品编码 Part Number | 等效串联电阻 ESR(m Ω max) 100Khz to 300Khz | 耐纹波电流 (mA rms/ 105 $^{\circ}$ C, 100Khz) | 损耗 Tan δ (120Hz) | 漏电流 (max) (μ A) | 尺寸 Φ D \times L (mm) |
|------------------------------|-----------------------------------|---------------------|---|--|-------------------------------|----------------------------|-----------------------------------|
| 2.5 | 220 | RPZ0E221M0506 | 25 | 3500 | 0.12 | 110 | 5 \times 6 |
| | 330 | RPZ0E331M0507 | 12 | 4310 | 0.12 | 165 | 5 \times 7 |
| | 390 | RPZ0E391M0507 | 12 | 4310 | 0.12 | 195 | 5 \times 7 |
| | 470 | RPZ0E471M0508 | 10 | 4610 | 0.12 | 235 | 5 \times 8 |
| | 560 | RPZ0E561M0508 | 10 | 4610 | 0.12 | 280 | 5 \times 8 |
| | 560 | RPZ0E561M0608 | 7 | 5000 | 0.12 | 280 | 6.3 \times 8 |
| | 680 | RPZ0E681M0608 | 7 | 5000 | 0.12 | 340 | 6.3 \times 8 |
| | 820 | RPZ0E821M0608 | 7 | 5000 | 0.12 | 410 | 6.3 \times 8 |
| | 820 | RPZ0E821M0808 | 7 | 6100 | 0.12 | 410 | 8 \times 8 |
| | 1000 | RPZ0E102M0808 | 7 | 6100 | 0.12 | 500 | 8 \times 8 |
| | 1500 | RPZ0E152M0812 | 7 | 6100 | 0.12 | 750 | 8 \times 12 |
| | 1500 | RPZ0E152M1012 | 7 | 6640 | 0.12 | 750 | 10 \times 12 |
| | 2200 | RPZ0E222M1012 | 7 | 6640 | 0.12 | 1100 | 10 \times 12 |
| | 3300 | RPZ0E332M1012 | 7 | 5230 | 0.12 | 1650 | 10 \times 12 |
| 4 | 100 | PPZ0G101M0506 | 25 | 1970 | 0.12 | 80 | 5 \times 6 |
| | 220 | PPZ0G221M0507 | 12 | 2610 | 0.12 | 176 | 5 \times 7 |
| | 270 | PPZ0G271M0507 | 12 | 2610 | 0.12 | 216 | 5 \times 7 |
| | 330 | PPZ0G331M0508 | 10 | 2610 | 0.12 | 264 | 5 \times 8 |
| | 470 | PPZ0G471M0608 | 9 | 2610 | 0.12 | 376 | 6.3 \times 8 |
| | 560 | RPZ0G561M0808 | 7 | 6100 | 0.12 | 448 | 8 \times 8 |
| | 680 | RPZ0G681M0808 | 7 | 6080 | 0.12 | 544 | 8 \times 8 |
| | 820 | RPZ0G821M0808 | 7 | 6080 | 0.12 | 656 | 8 \times 8 |
| | 1000 | RPZ0G102M0808 | 7 | 6080 | 0.12 | 800 | 8 \times 8 |
| | 1200 | RPZ0G122M0808 | 7 | 6100 | 0.12 | 960 | 8 \times 8 |
| | 1500 | RPZ0G152M0812 | 7 | 6240 | 0.12 | 1200 | 8 \times 12 |
| | 2200 | RPZ0G222M1012 | 7 | 6440 | 0.12 | 1760 | 10 \times 12 |
| | 3300 | RPZ0G332M1012 | 7 | 6440 | 0.12 | 2640 | 10 \times 12 |
| | 6.3 | 100 | RPZ0J101M0606 | 15 | 2390 | 0.12 | 126 |
| 150 | | RPZ0J151M0606 | 15 | 2690 | 0.12 | 189 | 6.3 \times 5 |
| 220 | | RPZ0J221M0507 | 12 | 2690 | 0.12 | 277 | 5 \times 7 |
| 270 | | RPZ0J271M0507 | 12 | 2690 | 0.12 | 340 | 5 \times 7 |
| 270 | | RPZ0J271M0608 | 9 | 2990 | 0.12 | 340 | 6.3 \times 8 |
| 330 | | RPZ0J331M0508 | 10 | 2690 | 0.12 | 416 | 5 \times 8 |
| 330 | | RPZ0J331M0608 | 9 | 2990 | 0.12 | 416 | 6.3 \times 8 |
| 390 | | RPZ0J391M0508 | 10 | 2690 | 0.12 | 491 | 5 \times 8 |
| 470 | | RPZ0J471M0608 | 8 | 4700 | 0.12 | 592 | 6.3 \times 8 |
| 470 | | RPZ0J471M0808 | 8 | 5700 | 0.12 | 592 | 8 \times 8 |
| 560 | | RPZ0J561M0608 | 8 | 4700 | 0.12 | 706 | 6.3 \times 8 |
| 560 | | RPZ0J561M0808 | 8 | 5700 | 0.12 | 706 | 8 \times 8 |
| 680 | | RPZ0J681M0808 | 9 | 4080 | 0.12 | 857 | 8 \times 8 |
| 820 | | RPZ0J821M0608 | 8 | 4700 | 0.12 | 1033 | 6.3 \times 8 |
| 820 | | RPZ0J821M0808 | 8 | 5700 | 0.12 | 1033 | 8 \times 8 |
| 1000 | | RPZ0J102M0808 | 9 | 4080 | 0.12 | 1260 | 8 \times 8 |
| 1500 | | RPZ0J152M0812 | 8 | 4520 | 0.12 | 1890 | 8 \times 12 |
| 1500 | | RPZ0J152M1012 | 7 | 6640 | 0.12 | 1890 | 10 \times 12 |
| 2200 | RPZ0J222M1012 | 7 | 5440 | 0.12 | 2772 | 10 \times 12 | |

RPZ Series
■ 编码和规格 Part number & Specifications

| 额定电压 Rated Voltage (V) | 标称容量 Capacitance (μ F) | 产品编码 Part Number | 等效串联电阻 ESR(m Ω max) 100Khz to 300Khz | 耐纹波电流 (mA rms/ 105 $^{\circ}$ C, 100Khz) | 损耗 Tan δ (120Hz) | 漏电流 (max) (μ A) | 尺寸 Φ D \times L (mm) |
|------------------------------|-----------------------------------|---------------------|---|--|-------------------------------|----------------------------|-----------------------------------|
| 10 | 150 | RPZ1A151M0507 | 13 | 2690 | 0.12 | 300 | 5 \times 7 |
| | 220 | RPZ1A221M0507 | 13 | 2690 | 0.12 | 440 | 5 \times 7 |
| | 220 | RPZ1A221M0606 | 15 | 2200 | 0.12 | 440 | 6.3 \times 5 |
| | 270 | RPZ1A271M0608 | 12 | 2690 | 0.12 | 540 | 6.3 \times 8 |
| | 330 | RPZ1A331M0608 | 12 | 2690 | 0.12 | 660 | 6.3 \times 8 |
| | 330 | RPZ1A331M0808 | 9 | 4080 | 0.12 | 660 | 8 \times 8 |
| | 470 | RPZ1A471M0808 | 9 | 4080 | 0.12 | 940 | 8 \times 8 |
| | 470 | RPZ1A471M0812 | 8 | 4080 | 0.12 | 940 | 8 \times 12 |
| | 560 | RPZ1A561M0812 | 8 | 4080 | 0.12 | 1120 | 8 \times 12 |
| | 680 | RPZ1A681M0812 | 8 | 4520 | 0.12 | 1360 | 8 \times 12 |
| | 820 | RPZ1A821M0812 | 8 | 4520 | 0.12 | 1640 | 8 \times 12 |
| | 1000 | RPZ1A102M0812 | 8 | 4520 | 0.12 | 2000 | 8 \times 12 |
| | 1000 | RPZ1A102M1012 | 7 | 5100 | 0.12 | 2000 | 10 \times 12 |
| 1500 | RPZ1A152M1012 | 7 | 5100 | 0.12 | 3000 | 10 \times 12 | |
| 16 | 33 | RPZ1C330M0508 | 15 | 2200 | 0.12 | 106 | 5 \times 8 |
| | 47 | RPZ1C470M0508 | 15 | 2200 | 0.12 | 150 | 5 \times 8 |
| | 68 | RPZ1C680M0508 | 15 | 2200 | 0.12 | 218 | 5 \times 8 |
| | 68 | RPZ1C680M0608 | 14 | 2690 | 0.12 | 218 | 6.3 \times 8 |
| | 82 | RPZ1C820M0608 | 13 | 2690 | 0.12 | 263 | 6.3 \times 8 |
| | 100 | RPZ1C101M0508 | 13 | 2200 | 0.12 | 320 | 5 \times 8 |
| | 100 | RPZ1C101M0608 | 12 | 2690 | 0.12 | 320 | 6.3 \times 8 |
| | 150 | RPZ1C151M0608 | 12 | 2690 | 0.12 | 480 | 6.3 \times 8 |
| | 220 | RPZ1C221M0608 | 12 | 2690 | 0.12 | 704 | 6.3 \times 8 |
| | 220 | RPZ1C221M0808 | 10 | 5000 | 0.12 | 704 | 8 \times 8 |
| | 270 | RPZ1C271M0808 | 10 | 5000 | 0.12 | 864 | 8 \times 8 |
| | 330 | RPZ1C331M0808 | 10 | 5000 | 0.12 | 1056 | 8 \times 8 |
| | 470 | RPZ1C471M0812 | 10 | 5230 | 0.12 | 1504 | 8 \times 12 |
| | 470 | RPZ1C471M1012 | 10 | 6100 | 0.12 | 1504 | 10 \times 12 |
| | 560 | RPZ1C561M1012 | 10 | 6100 | 0.12 | 1792 | 10 \times 12 |
| 680 | RPZ1C681M1012 | 10 | 6100 | 0.12 | 2176 | 10 \times 12 | |
| 820 | RPZ1C821M1012 | 10 | 6100 | 0.12 | 2624 | 10 \times 12 | |
| 25 | 47 | RPZ1E470M0606 | 40 | 1050 | 0.12 | 235 | 6.3 \times 5 |
| | 68 | RPZ1E680M0608 | 30 | 1600 | 0.12 | 340 | 6.3 \times 8 |
| | 100 | RPZ1E121M0808 | 22 | 1800 | 0.12 | 500 | 8 \times 8 |
| | 220 | RPZ1E221M1012 | 22 | 4000 | 0.12 | 1100 | 8 \times 8 |
| | 270 | RPZ1E271M1012 | 14 | 4000 | 0.12 | 1350 | 8 \times 12 |
| | 330 | RPZ1E331M0812 | 16 | 3000 | 0.12 | 1650 | 8 \times 12 |
| | 330 | RPZ1E331M1012 | 14 | 4000 | 0.12 | 1650 | 10 \times 12 |
| | 470 | RPZ1E471M1012 | 14 | 4000 | 0.12 | 2350 | 10 \times 12 |

■ 纹波电流频率补偿系数 Frequency coefficient of allowable ripple current

| Frequency 频率 | 120Hz \leq f<1KHz | 1KHz \leq f<10KHz | 10KHz \leq f<100KHz | 100kHz \leq f<500KHz |
|----------------|---------------------|---------------------|-----------------------|------------------------|
| Coefficient 系数 | 0.05 | 0.30 | 0.70 | 1.00 |