

VHH Series 导电高分子混合型片式铝电解电容器 150°C 1000 小时产品

Hybrid conductive polymer. 150°C 1000 hours . For SMD Type

- 混合型电解质，高耐压，长寿命，低阻抗，150°C.1000 小时。
 - 性能稳定，可靠性高，符合 RoHS
 - 无卤对应品
 - 符合 AEC-Q200
- Hybrid conductive polymer, high voltage, long life, low impedance, 150°C1000 hours.
- High stability and reliability. RoHS Compliant
- Halogen-free, corresponding product
- AEC-Q200 Compliant

NEW

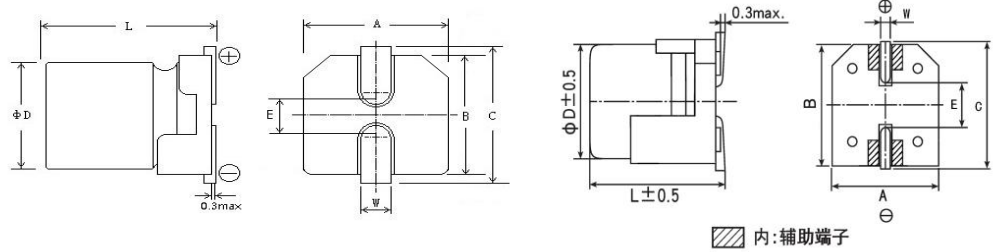


■ 主要技术性能 Specifications

使用温度范围 Operating Temperature Range	-55~+150°C				
额定电压范围 Rated Voltage Range	16~50V DC				
标称电容量允许偏差 Capacitance Tolerance	±20% (120Hz, 20°C)				
漏电流(20°C) Leakage Current	Rated voltage	16~50V			
	Time	2 分钟 (after 2 minutes)			
	Case Size	Φ8~Φ10			
	Leakage Current	I≤0.01 CV (μA)或 3μA 取较大者 I≤0.01 CV or 3μA whichever is greater			
损耗角正切值 Dissipation Factor (120Hz 20°C)	WV (V)	16	25	35	50
	tgδ	0.16	0.14	0.12	0.10
温度特性 (120Hz) Temperature Characteristics Impedance Ratio(100kHz)	WV(V)	16	25	35	50
	Z _{-25°C} / Z _{+20°C}	1.5	1.5	1.5	1.5
	Z _{-55°C} / Z _{+20°C}	2	2	2	2
耐久性 Load Life	+150°C施加额定电压 1000 小时,恢复 16 小时后,电容器应满足要求 After applying rated voltage for 1000hours at +150°C and then resumed 16 hours. The capacitor shall meet the following limits.				
	电容量变化率 Capacitance Change	≤±30%初始测量值 ≤±30% of Initial measured value			
	漏电流值 Leakage Current	≤规定值 ≤The specified value			
	损耗角正切值 Dissipation Factor	≤2 倍规定值 ≤200% of the specified value			
	等效串联电阻(ESR) Equivalent series resistance	≤2 倍规定值 ≤200% of the specified value			

VHH Series

外形图及尺寸 Case size table



ΦD	L	A±0.2	B±0.2	C±0.2	E±0.2	W
Φ8	10.2±0.5	8.3	8.3	9.1	3.1	0.9~1.1
Φ10	10.2±0.5	10.3	10.3	11.1	4.5	0.9~1.1

mm

标称电容量、额定电压、额定纹波电流与外形尺寸对应表

Nominal capacitance, rated voltage, rated ripple current and case size table

WV / μF	16V			25V			35V			50V		
	ΦD×L mm	I (mA)	ESR (mΩ)	ΦD×L mm	I (mA)	ESR (mΩ)	ΦD×L mm	I (mA)	ESR (mΩ)	ΦD×L mm	I (mA)	ESR (mΩ)
68										8x10.2	1250	30
100										10x10.2	1600	28
150							8x10.2	1600	22			
220				8x10.2	1600	22						
270	8x10.2	1700	20				10x10.2	2000	20			
330				10x10.2	2000	20						
470	10x10.2	2100	18									

I~额定纹波电流 Rated ripple current: (mA, 150°C, 100kHz), ESR: (mΩ, 20°C, 100KHZ)